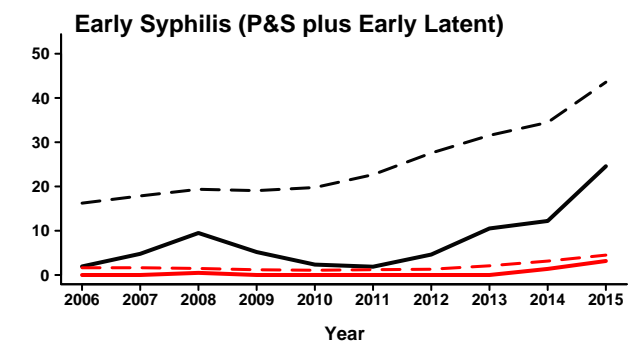
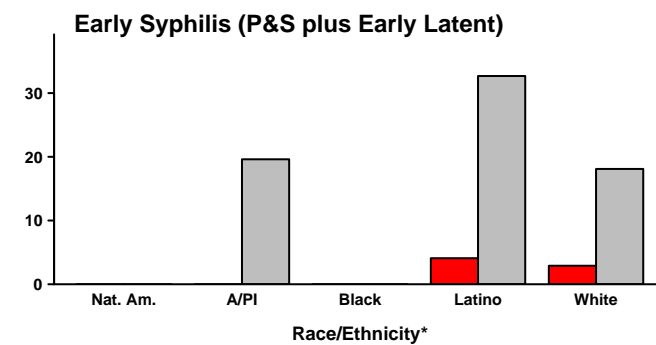
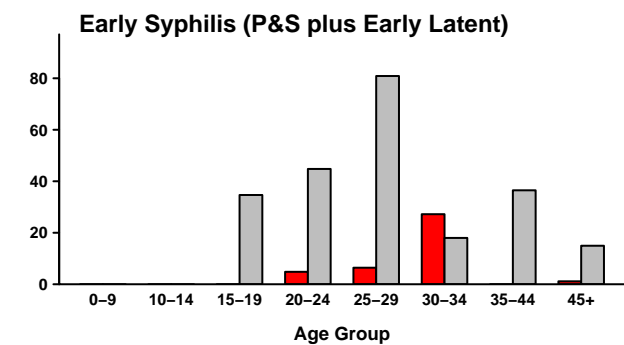
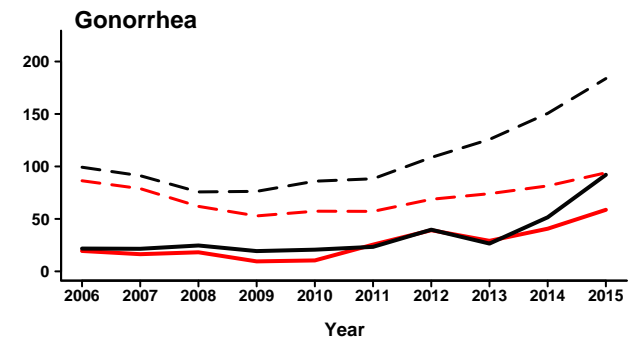
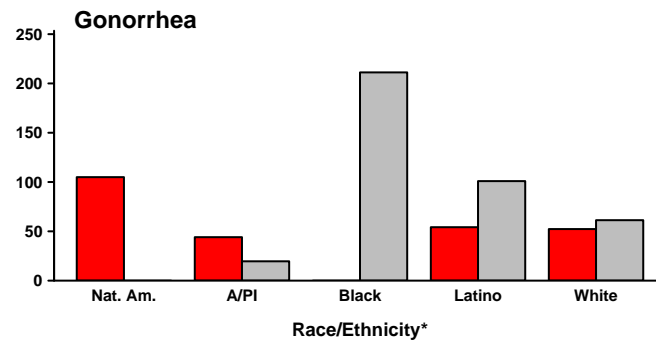
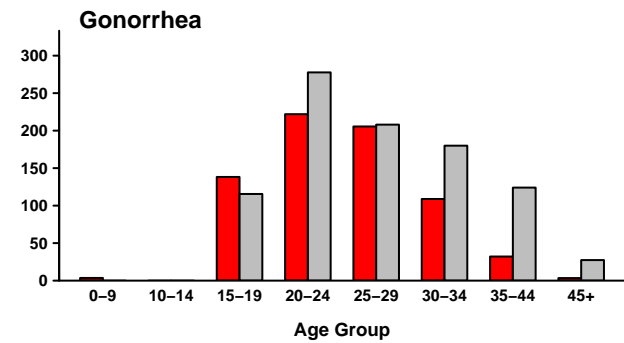
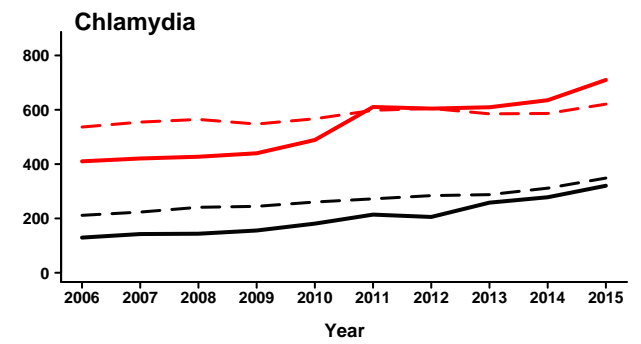
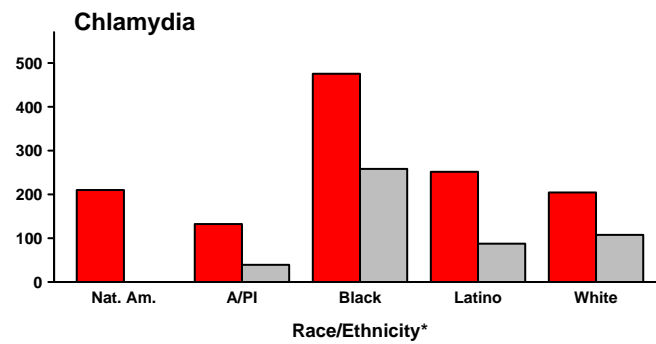
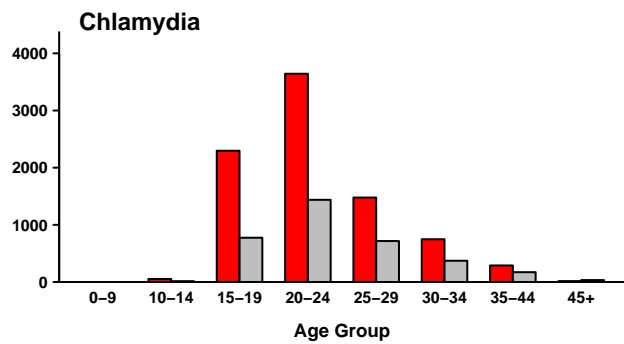


Santa Barbara County – Chlamydia, Gonorrhea, and Early Syphilis

Rates by Age Group (2015), Race/Ethnicity (2015), and Year



■ Female ■ Male

— County Female — County Male
 - - - State Female - - - State Male



* Race data may be missing for a substantial number of cases. See the Data Limitations page for further information.
 Note: Rates are per 100,000 population.
 Source: California Department of Public Health, STD Control Branch

Santa Barbara County – Chlamydia, Gonorrhea, and Early Syphilis Cases and Rates Tables for 2015

Gender & Age Group	Chlamydia			Gonorrhea			P&S Syphilis			Early Latent Syphilis			Population	
	Cases	Percent ¹	Rate	Cases	Percent ¹	Rate	Cases	Percent ¹	Rate	Cases	Percent ¹	Rate	Number	Percent ¹
COUNTY TOTAL	2,293	100.0%	514.8	336	100.0%	75.4	40	100.0%	9.0	22	100.0%	4.9	445,444	100.0%
Female Total	1,573	68.6%	709.9	130	38.7%	58.7	4	10.0%	1.8	3	13.6%	1.4	221,593	49.7%
Ages														
0 – 9	0	0.0%	0.0	1	0.8%	3.6	0	0.0%	0.0	0	0.0%	0.0	27,914	12.6%
10 – 14	7	0.4%	52.8	0	0.0%	0.0	0	0.0%	0.0	0	0.0%	0.0	13,264	6.0%
15 – 19	382	24.3%	2,296.3	23	17.8%	138.3	0	0.0%	0.0	0	0.0%	0.0	16,636	7.5%
20 – 24	755	48.1%	3,643.1	46	35.7%	222.0	0	0.0%	0.0	1	33.3%	4.8	20,724	9.4%
25 – 29	230	14.6%	1,477.4	32	24.8%	205.5	0	0.0%	0.0	1	33.3%	6.4	15,568	7.0%
30 – 34	110	7.0%	748.5	16	12.4%	108.9	3	75.0%	20.4	1	33.3%	6.8	14,697	6.6%
35 – 44	72	4.6%	289.2	8	6.2%	32.1	0	0.0%	0.0	0	0.0%	0.0	24,894	11.2%
45 +	14	0.9%	15.9	3	2.3%	3.4	1	25.0%	1.1	0	0.0%	0.0	87,896	39.7%
Not Specified	3	0.2%	-	1	0.8%	-	0	0.0%	-	0	0.0%	-		
Male Total	717	31.3%	320.3	206	61.3%	92.0	36	90.0%	16.1	19	86.4%	8.5	223,851	50.3%
Ages														
0 – 9	0	0.0%	0.0	0	0.0%	0.0	0	0.0%	0.0	0	0.0%	0.0	28,837	12.9%
10 – 14	2	0.3%	14.5	0	0.0%	0.0	0	0.0%	0.0	0	0.0%	0.0	13,776	6.2%
15 – 19	134	18.7%	774.2	20	9.8%	115.6	5	13.9%	28.9	1	5.3%	5.8	17,307	7.7%
20 – 24	321	44.8%	1,437.7	62	30.4%	277.7	6	16.7%	26.9	4	21.1%	17.9	22,328	10.0%
25 – 29	124	17.3%	716.5	36	17.6%	208.0	11	30.6%	63.6	3	15.8%	17.3	17,307	7.7%
30 – 34	62	8.6%	371.9	30	14.7%	180.0	2	5.6%	12.0	1	5.3%	6.0	16,670	7.4%
35 – 44	47	6.6%	171.5	34	16.7%	124.1	6	16.7%	21.9	4	21.1%	14.6	27,404	12.2%
45 +	27	3.8%	33.7	22	10.8%	27.4	6	16.7%	7.5	6	31.6%	7.5	80,222	35.8%
Not Specified	0	0.0%	-	2	1.0%	-	0	0.0%	-	0	0.0%	-		

Gender & Race/Ethnicity	Chlamydia			Gonorrhea			P&S Syphilis			Early Latent Syphilis			Population	
	Cases	Percent ¹	Rate	Cases	Percent ¹	Rate	Cases	Percent ¹	Rate	Cases	Percent ¹	Rate	Number	Percent ¹
COUNTY TOTAL	2,293	100.0%	514.8	336	100.0%	75.4	40	100.0%	9.0	22	100.0%	4.9	445,444	100.0%
Female Total	1,573	68.6%	709.9	130	38.7%	58.7	4	10.0%	1.8	3	13.6%	1.4	221,593	49.7%
American Indian/Alaska Native	2	0.4%	210.0	1	0.9%	105.0	0	0.0%	0.0	0	0.0%	0.0	953	0.4%
Asian/Pacific Islander	15	3.1%	132.3	5	4.4%	44.1	0	0.0%	0.0	0	0.0%	0.0	11,341	5.1%
Black/African-American	15	3.1%	475.4	0	0.0%	0.0	0	0.0%	0.0	0	0.0%	0.0	3,155	1.4%
Latina/Hispanic	246	50.3%	251.5	53	46.9%	54.2	2	50.0%	2.0	2	66.7%	2.0	97,799	44.1%
White	211	43.1%	204.4	54	47.8%	52.3	2	50.0%	1.9	1	33.3%	1.0	103,238	46.6%
Other/Multi/Not Specified	1,084	68.9%	-	17	13.1%	-	0	0.0%	-	0	0.0%	-	5,107	2.3%
Male Total	717	31.3%	320.3	206	61.3%	92.0	36	90.0%	16.1	19	86.4%	8.5	223,851	50.3%
American Indian/Alaska Native	0	0.0%	0.0	0	0.0%	0.0	0	0.0%	0.0	0	0.0%	0.0	1,051	0.5%
Asian/Pacific Islander	4	1.9%	39.2	2	1.1%	19.6	1	2.8%	9.8	1	5.6%	9.8	10,197	4.6%
Black/African-American	11	5.2%	258.2	9	5.1%	211.2	0	0.0%	0.0	0	0.0%	0.0	4,261	1.9%
Latino/Hispanic	91	42.7%	87.5	105	59.3%	100.9	20	55.6%	19.2	14	77.8%	13.5	104,025	46.5%
White	107	50.2%	107.6	61	34.5%	61.3	15	41.7%	15.1	3	16.7%	3.0	99,463	44.4%
Other/Multi/Not Specified	504	70.3%	-	29	14.1%	-	0	0.0%	-	1	5.3%	-	4,855	2.2%

Congenital Syphilis	2011	2012	2013	2014	2015
- Cases	0	0	1	0	1
- Rate per 100,000 live births	0.0	0.0	17.4	0.0	17.1

¹ Gender specific age groups and race/ethnicity percent calculations exclude "Not Specified" from the denominator.

² Overall county rates were calculated using the July 1 county population estimates from the Department of Finance. (For Santa Barbara County, the July 1, 2015 estimate is 445,444).

Note: Rates for chlamydia, gonorrhea, P&S syphilis, and early latent syphilis are per 100,000 population.

Source: California Department of Public Health, STD Control Branch

