

Influenza Surveillance Activities as of 5/20/17 (Week 20) Santa Barbara County Public Health Department

The 2016-2017 influenza surveillance season began on 10/2/16 (disease week 40).

Summary of recent influenza activity in Santa Barbara County the past week was “local”.

Sentinel Data: The six reporting Sentinel Provider Sites reported influenza-like illness (ILI) in 3 of the patients seen in weeks 19 and 20 (3/1104; 0.3%), (please see the chart below). Of those patients seen, 3 had been vaccinated from influenza this season. None of the 3 patients had a positive flu test. Of the Hospital Emergency Departments that reported seeing patients the past 2 weeks, 60 (1.8%) of the 3271 patients seen had ILI and 2 were admitted (this trend is higher than Disease Weeks 19/20 2016 with 0.60% (33/5456) of ED visits due to ILI).

Laboratory Data: This past week the local hospital labs have reported having tested 64 in-patients with PCR and rapid tests with 2 testing positive (3.13%, 0 flu A, 2 flu B) (please see chart 2 below). A total of 315 patients have been tested by the Public Health Lab from hospital laboratories with PCR testing of which 207 tested positive (66.6%, 185 flu A/H3, 8 2009 A/H1, 16 flu B; 2 patients had dual infection with flu A and B) this season. Of those patients tested, 53 (16.8%) met the reportable lab flu criteria (patient was hospitalized, in the ICU or fatal). Beginning in week 11, the Public Health Lab will only test mandated reportable flu specimens.

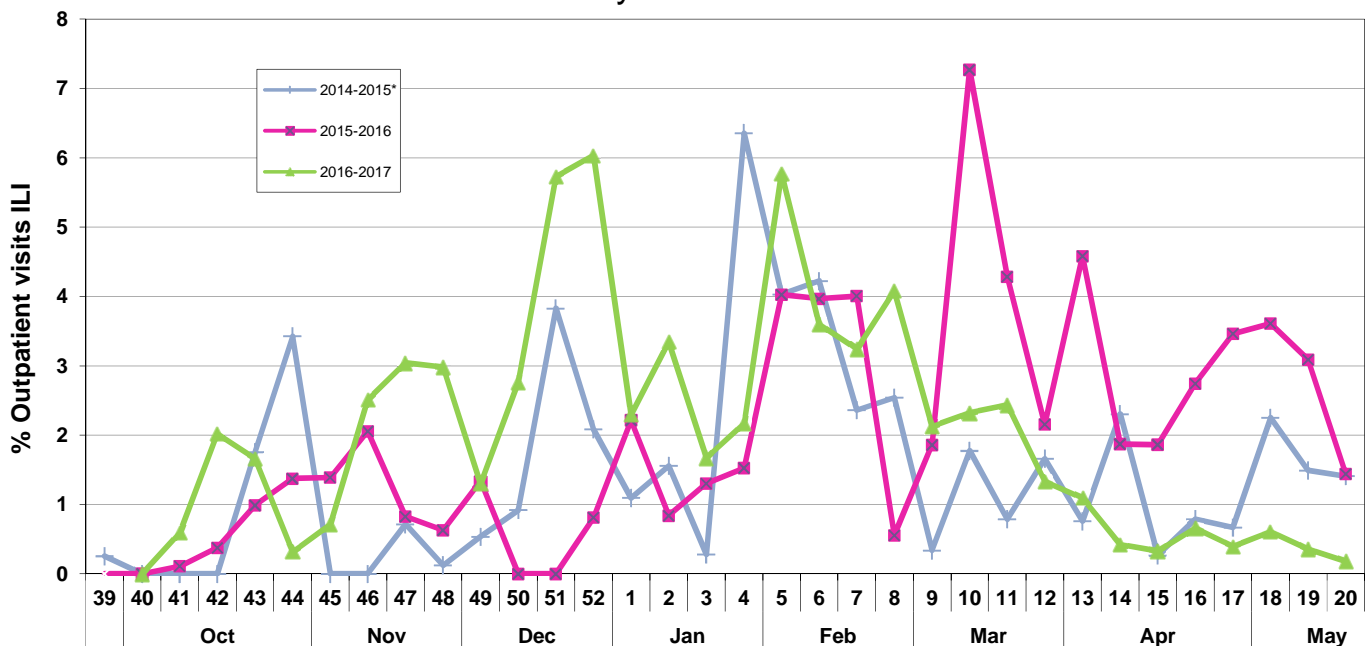
Provider reports: There have been 6 confirmed ICU hospitalizations in the reportable age range 0-64 years. This season there has been 5 clusters of Upper Respiratory Illness reported in County Skilled Nursing, Long Term Care Facilities and a congregate setting. There have been 3 known flu-related deaths in the County this season, 1 of which were within the mandated reportable age range of 0-64 years (61 years old) and two additional deaths of a 69 and an 88 year old.

Of note: On September 19, 2016 the Santa Barbara County Public Health Department issued a Health Officer order for hospitals to implement influenza vaccination programs for all their health care workers through the end of the flu season on May 20, 2017.

1) CDC Sentinel Provider Program in Santa Barbara County Influenza-like Illness (ILI)

(Lompoc Health Care Center, Santa Barbara Health Care Center, Franklin Health Care Center, Carpinteria Health Care Center, Santa Maria Health Care Center, Westmont College)

Percent of Outpatient Visits Due to ILI
 Santa Barbara County Sentinel Providers 2012-2017



* There is an additional week in the 2014-2015 calendar. The data for 2014 Disease weeks 40-53 is displayed using the previous week; e.g. the 2014-15 season, the data for week 53 corresponds to the data point at Week 52 on the chart.

Influenza-like illness (ILI): Fever (≥ 100 deg F [37.8 deg C] oral or equivalent in office or reported) PLUS cough and/or sore throat (in absence of other known cause)

*Regional: Outbreaks of influenza or increases in ILI and recent laboratory confirmed influenza in a single region of the state.

2) Influenza testing results collected from Marian Regional Medical Center, Lompoc Valley Medical Center and PDL (Cottage Health Systems contracted laboratory).

Hospital Lab Rapid Flu Testing Results 2016-2017 Season

(Cottage, Goleta Valley, Santa Ynez, Marian, and Lompoc Hospital In-patients)

