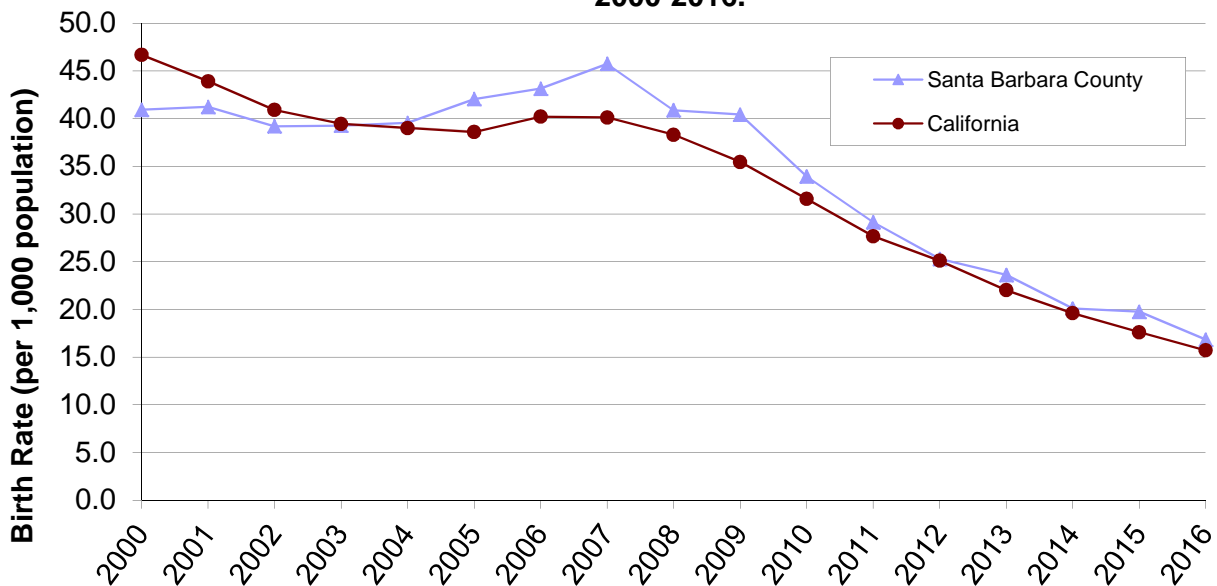


Birth Rates of Females Aged 15-19: Santa Barbara County California, 2000-2016.

	# of SBC births	Population Female Aged 15-19	Santa Barbara County	California
2000	641	15665	40.9	46.7
2001	630	15283	41.2	43.9
2002	590	15053	39.2	40.9
2003	594	15132	39.3	39.4
2004	612	15478	39.5	39.0
2005	651	15484	42.0	38.6
2006	684	15857	43.1	40.2
2007	743	16245	45.7	40.1
2008	675	16517	40.9	38.3
2009	673	16654	40.4	35.4
2010	638	18807	33.9	31.6
2011	551	18909	29.1	27.7
2012	469	18546	25.3	25.1
2013	439	18599	23.6	22.0
2014	379	18865	20.1	19.6
2015	377	19093	19.7	17.6
2016	321	19084	16.8	15.7

Birth Rates of Females Aged 15-19: Santa Barbara County & California, 2000-2016.*



* Teenage mothers are defined as 15-19 years of age at time of childbirth.

Source: Birth data: Vital Records office of Santa Barbara County and Vital Statistics Query System - cdph.ca.gov

Population projections: 2000-2009 Population: State of California, Department of Finance, Race/Hispanics Population with Age and Gender Detail, 2000-2010. Sacramento, California, September 2012.

2010-2015 Population: P-3: State and County Projections Dataset, California Department of Finance. Demographic Research Unit. February 2017.